

Thank you for purchasing the Craven Speed FlexPod Bracket X

Contents:

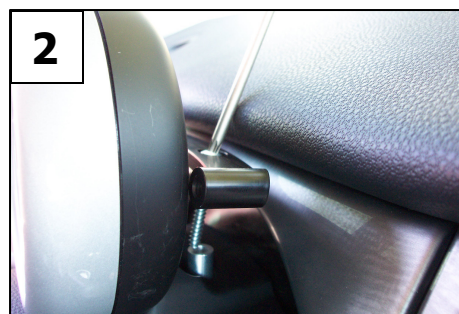
- Bracket X Bar
- 2 Bolts
- 2 Aluminum Spacers
- These Instructions

Please Follow All Directions Carefully.

1. Remove factory mounting screws from behind tachometer. Try not to move the tach, this will make the next step easier.



2. Place included spacers over mounting holes. Attach gauge base, indented side up, using the included M5 Bolts.



Questions, Comments or Suggestions?  
Call Craven Speed at 434-CRAVEN4 (434-272-8364)

