

Thank you for purchasing the FlexPod Bracket Z

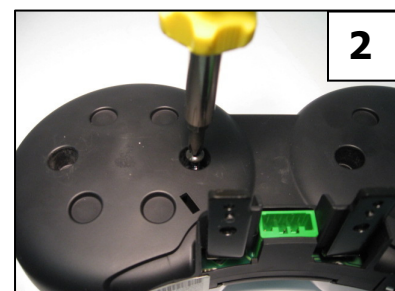
Contents:

- Bracket Z
- 2 Plastite Screws
- 2 Plastic Spacers
- These Instructions

1. Remove factory-mounting screws from behind tach/speedometer unit. Press the release button on the green wiring attachment to detach it and lift the unit off the steering wheel. Keep the factory screws!



2. Remove the two factory screws from the back of the tachometer. Or remove the two from the back of the speedometer if you have a dual gauge and want to mount your device on that side.



3. Place spacers into holes where the screws were, and secure the mounting bracket with the included screws. Do not over tighten.



4. Place unit back onto steering wheel and press the wiring attachment back into position. Tighten the factory screws into the bracket on top of the wheel.



Questions, Comments, Suggestions?
Call Craven Speed at (434)CRAVEN4 (272-8364)