

Thank you for purchasing the Craven Speed TomTom Mounting Kit
Part # CRMC-1000-R52

Contents

- Bracket R
- 2 Plastite Screws
- 2 Spacers
- 1 Button Head Bolt
- 1 Washer
- 1 TomTom Ball
- 1 Setscrew
- 1 Arm

Tools Needed

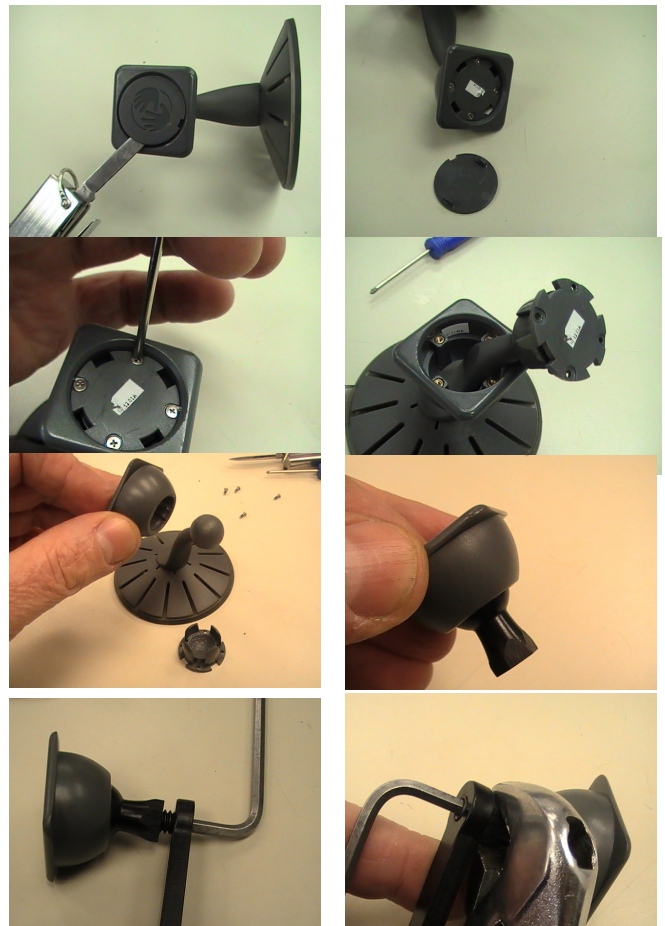
- Philips Head Screwdriver
- # 25 Torx Wrench
- 3/16 Hex Wrench
- 3/32 Hex Wrench
- Adjustable Wrench

Install the Mounting Bracket

1. Remove factory-mounting screws behind tachometer using the # 25 Torx wrench.
2. Keep these Torx screws safe; you will need to put them back on.
3. Pull the tach towards you to slide the tach off of a hidden rail.
4. Lean the tach towards the wheel to gain access to the 3 screws on the back of it.
5. Using the Philips, remove two of the screws on the back cover of the tach.
6. You may wish to keep the OEM screws, but you will not need them for the install.
7. Drop the 2 spacers into the holes where the screws were.
8. Place the Bracket R so that it fits onto the 2 spacers, it can face so that the mounting point is on either the left or right side of the tach.
9. Affix the bracket with the included Plastite screws.
10. Make sure the bracket is tight and does not wobble.
11. Put the tach back in its original position, and reattach it with the Torx screws.

Assemble the TomTom Mount

1. Insert the small nail file under the faceplate. Locate one of the 2 ears on the inside and push it toward the outside. The plate should pop off.
2. Underneath the faceplate are 4 small screws on the socket. Unscrew each with a small screwdriver.
3. After the screws are removed, push the socket through the square base.
4. Pull the socket off of the ball and then force the ball through the square base.
5. Clip the socket to the CravenSpeed TomTom adaptor. Then put the square base over the socket and TomTom adaptor.
6. Screw the setscrew into the back of the TomTom adaptor. Place your bracket arm (not included) over the setscrew and use the Allen wrench to tighten the setscrew.
7. Then using the wrench to hold the TomTom adaptor, tighten again with the Allen wrench.



Questions, Comments, Suggestions

Call Craven Speed at (434)CRA-VEN4